



Sonation APSS

Operating data monitoring for sound insulation boxes

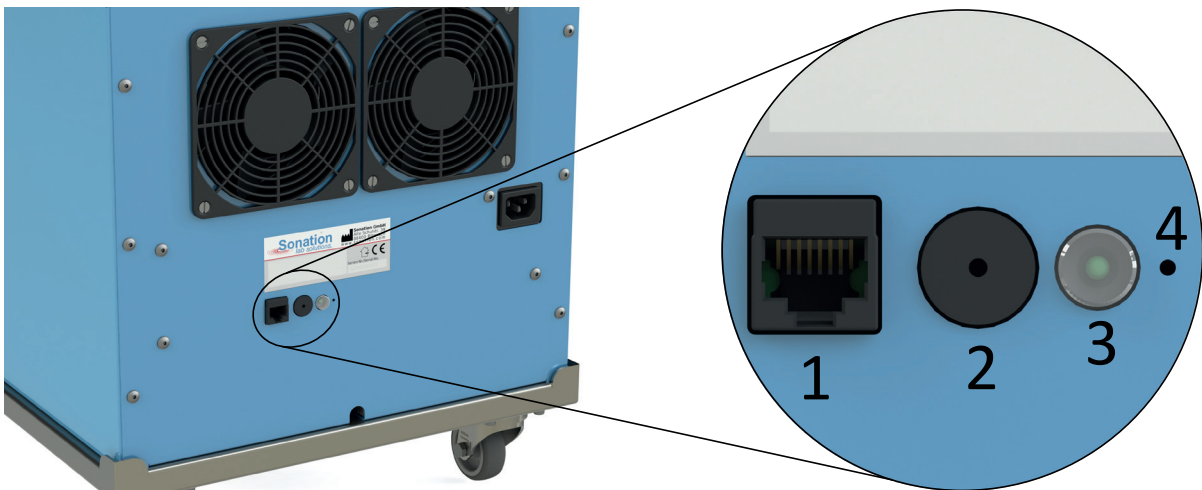
Noise protection



Operating data monitoring for sound insulation boxes

Your equipment in good hands

The operating data monitoring module APPS (Active Pump Protection System) enables you to protect your sensitive and important equipment perfectly. With the new module, which is suitable and retrofittable for all Sonation sound insulation boxes, the insulated device is optimally protected. All important operating data such as temperature, current consumption and the function of the fans are constantly monitored. In the event of a fault, a visual and acoustic warning is issued.



1: Interface for connecting the APPS-ICBL interface cable or for connecting the APPS-EDU display module
2: Piezo loudspeaker | 3: Button with LED | 4: Reset

■ Temperature monitoring with alarm function

The internal temperature is measured continuously. A visual and acoustic warning is given when a threshold is exceeded. If the temperature reaches dangerous values due to a pump defect, the power supply to the pump is interrupted to prevent consequential damage (can be switched off).

■ Wide-range input

The sound insulation box can be operated on 115V and 230V networks.

■ Temperature controlled fans

The fan speed is only as high as necessary to keep the unit cool. This extends the life of the fans and also reduces the noise level.

■ Fan monitoring

Should one or more fans fail or lose a significant amount of power, this is indicated visually and acoustically. The system monitors and thus detects age-related wear and tear as well as the sudden total failure of a fan.

■ Current monitoring

The current delivered via the integrated socket is measured continuously. If the current consumption exceeds a critical value for a longer period of time, which can occur for example in case of bearing damage, the power supply is interrupted to prevent a total loss of the pump.

■ Retrofittability

All existing sound insulation enclosures can be retrofitted with the system.

Accessories

■ Display module APPS-EDU

The display is used for the clear presentation of all collected data. It can be connected to all Sonation products with APPS module. The most important functions are:

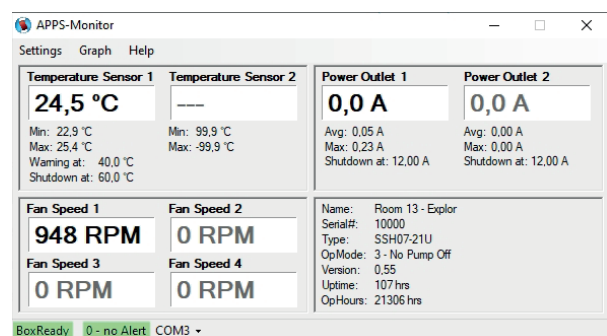


- Display of the current, minimum and maximum temperature.
- Displays the current, average and maximum current consumption of the device connected in the sound enclosure.
- Display of fan speed and load.
- Display of the operating hours.

- Display of pending warnings in plain text (e.g. excess temperature, fan failure, etc.).
- Temperature warning thresholds can be changed.
- Potential-free output for switching further devices e.g. in case of overtemperature

■ PC connection cable with APPS monitor

Interface cable for connection to a PC. The supplied software "APPS Monitor" displays the data clearly and allows the temperature warning thresholds to be changed.



■ Oil leak sensor APPS-OLS

Liquid sensor for reliable warning when oil or other liquids are leaking.





Sonation GmbH
Alte Schulstraße 39
D-88400 Biberach

Tel.: +49 (0) 7351 30038-39
E-Mail: mail@sonation.com
www.sonation.com

IMPROVE YOUR SCIENCE



www.sonation.com